

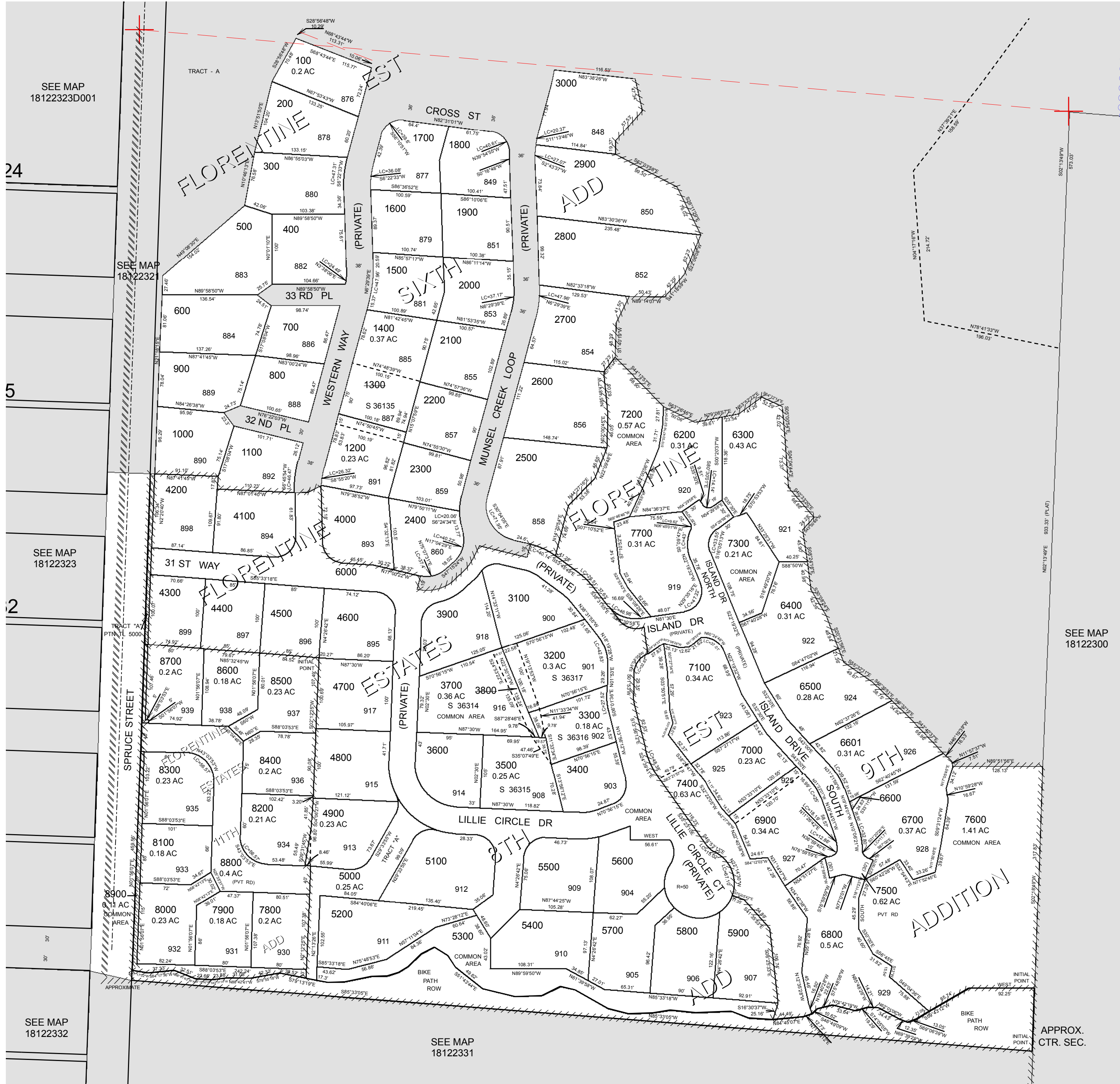
FOR ASSESSMENT AND TAXATION ONLY

S.E.1/4 N.W.1/4 SEC.23 T.18S. R.12W. W.M.
Lane County
1" = 100'

18122324
FLORENCE

GIS DATA
4/7/2010 9:13:06 AM : lcatbhh

CANCELLED:
3800
6100
1300



SEE MAP 18122330

SEE MAP 18122331

APPROX. CTR. SEC.

REVISIONS:
11/21/2006 - LCAT140 - CONVERT MAP TO GIS
4/7/2010 - LCAT142 - CANCEL TL 1300 TO 1400

FLORENCE
18122324